

"CONCOURSE QUALITY, HOBBYIST PRICE"



www.martiauto.com
13238 W Butler Drive
El Mirage, AZ 85335
Phone (623) 935-2558
Fax (623) 935-2579

DELUXE MARTI REPORT®



Proud to display this symbol

Copyright Kevin Marti 2025

Thank you for your interest in our services. We have determined the following information for your vehicle from the Ford Database we have:

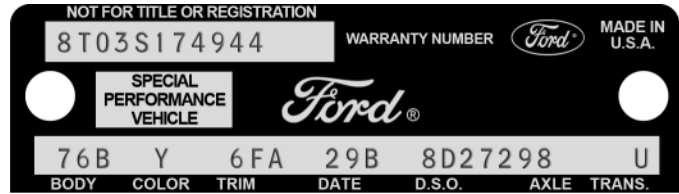
12345678901234567890123456789012345678901234567890123456789012345678901234567890
8T03S174944 Y 6F 2J 29B2447 2729 9MRB 3 U 5 E D 2 D 7 84X9993 B 2

DOOR DATA PLATE INFORMATION

Serial Number **8T03S174944-02447**
 8 1968
 T Built at Metuchen
 03 Shelby 2-Door Convertible
 S 428-4V PI V-8 Engine GT-500
 174944 Serial Number of this Ford scheduled for production at Metuchen
 2447 Shelby Unit Number scheduled for production

76B Shelby 2-Door Convertible
 Y Sunlit Gold Paint, Ford #3073-A
 6FA Saddle Vinyl Luxury Bucket Seats
 29B Scheduled for build February 29, 1968
 8D2729 Home Office Reserve Ordering District under Domestic Special Order # 2729

8 3.50 Conventional Rear Axle
 U C-6 Select Shift Automatic Transmission



IMPORTANT DATES

ORDER RECEIVED: **12/09/67**
 CAR SERIALIZED: **02/15/68**
 BUCKED: **02/22/68**
 SCHEDULED FOR BUILD: **02/29/68**
 ACTUALLY BUILT: **02/27/68**
 RELEASED: **02/27/68**
 SOLD: **--**

STATISTICS

Your vehicle was one of:

- 97** With this Paint Code
- 15** With these Paint/Trim Codes
- 249** With these Engine/Transmission Codes
- 402** Ordered as Shelby GT-500s
- 431** With Black Power Top w/Glass Backlite

For the 1968 Shelby 2-Door Convertible

ORDER TYPE: RETAIL
 DSO ITEM #: 2447
 DEALER #: 47A003
 FULLER FORD INC
 900 W EIGHTH ST
 CINCINNATI OH 45203

Your vehicle was equipped with the following features:

- Shoulder Harnesses
- Black Power Top w/Glass Backlite
- Extra Cooling Package
- Visibility Group
- Wheel Lip Moldings
- Power Disc Brakes
- Power Steering
- Tilt-Away Steering Wheel
- AM Radio
- Interior Decor Group
- Tachometer and Trip Odometer

Your vehicle was actually produced on February 27, 1968 -- two days ahead of schedule.

Kevin Marti